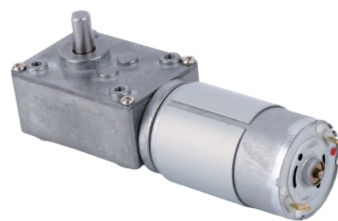


DC WORM GEAR MOTOR DM-58SW555

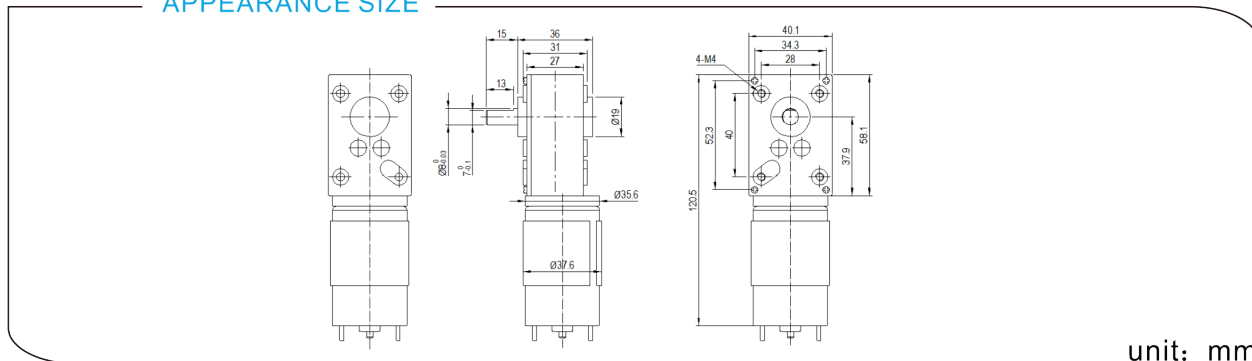
典型应用/Typical applications :

自动快锁门、装订机、自动电视架、点钞机、聚光灯、卫生纸机、
办公设备、家用电器、自动执行机构

Auto shutter, binding machine, automatic TV rack, money counter,
spotlight, tissue machine, office equipments, household appliances,
automatic actuator



APPEARANCE SIZE



unit: mm

齿轮箱参数/Gearbox Data:

级数 Number of stages	3	4
减速比 Reduction Ratio i	54、75、109、161、167、322	313、405、402、500、548、663、708、1327
齿轮箱长度 Gearbox Length L (cm)	36	36
破坏扭力 Breaking Torque(kgf.cm)	15	35
齿轮箱效率 Gearbox Efficiency η	40%	36%

电机参数/Driving Motor Data:

DC Motor Model	Rated	No Load		Max Efficiency Load			Stall		
	电压	电流	转速	电流	转速 (nm)	扭矩 (tm)	功率	扭矩	电流
	Volt.	Current	Speed	Current	Speed	Torque	P.out	Torque	Current
	V	mA	r/min	mA	r/min	gf.cm	W	gf.cm	mA
DM-555-012-4500	12	≤200	4500	≤1000	4000	200	8.2	≥1800	≥6000
DM-555-012-6000	12	≤450	6000	≤2000	5500	200	11.2	≥2400	≥11000
DM-555-024-6500	24	≤210	6500	≤1000	6000	200	12.3	≥2600	≥7000
DM-555-024-7000	24	≤220	7000	≤600	6700	100	6.8	≥2300	≥10000
DM-555-024-14000	24	≤430	14000	≤1960	13100	200	26.8	≥3100	≥12000

减数电机参数/Geared Motor Data :

Gear Motor Model	额定电压 Rated voltage	No load		Max Efficiency Load			Stall		
		电流	转速	电流	转速 (n)	扭矩 (t)	功率	扭矩	电流
		Current	Speed	Current	Speed	Torque	P.out	Torque	Current
	V	A	r/min	A	r/min	kgf.cm	W	kgf.cm	A
DM-58SW555-0126000-313K	12	0.21	17.7	1.23	17.7	19.2	2.84	104.68	5.74
DM-58SW555-0123525-663K	12	0.09	4.6	0.68	3.8	41.6	1.63	244.9	3.56
DM-58SW555-0124500-1327K	12	0.07	2.9	0.76	2.6	68.65	1.83	636.1	6.45
DM-58SW555-0246500-663K	24	0.13	10.2	0.81	8.6	46.1	4.06	237.9	4.55

电机参数仅供参考, 请以实际样板为准; 可以依据客户要求定制参数。

The motor parameters are for reference only, please refer to real measured data;

We can customize parameters according to customer requirements.

减数电机输出转速=直流电机输出转速/齿轮箱减数比; 减数电机输出扭矩=直流电机输出扭矩*齿轮箱减数比*齿轮箱传动效率。

Gear Motor Output Speed=DC Motor Speed/Gear Ratio (n=n_m/i)

Gear Motor Output Torque=DC Motor Torque*Gear Ratio*Gearbox Efficiency. (t=t_m*i*η)