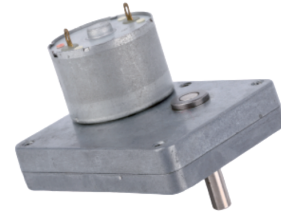


DC SPUR GEAR MOTOR DM-70SS3525

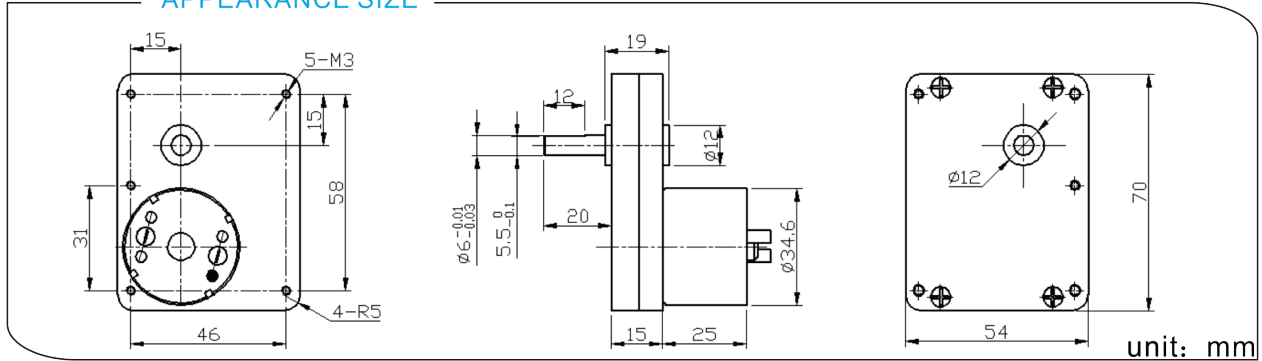
典型应用/Typical applications :

自动快锁门、装订机、自动电视架、点钞机、聚光灯、卫生纸机、
办公设备、家用电器、自动执行机构

Auto shutter, binding machine, automatic TV rack, money counter,
spotlight, tissue machine, office equipments, household appliances,
automatic actuator



APPEARANCE SIZE



齿轮箱参数/Gearbox Data:

| 级数 Number of stages | 3 | 4 | 5 |
|---------------------------------|-------|---------|---------|
| 减数比 Reduction Ratio i | 54、73 | 217、293 | 564、763 |
| 齿轮箱长度 Gearbox Length L (mm) | 15 | 15 | 15 |
| 破坏扭力 Breaking Torque(kgf.cm) | 25 | 35 | 40 |
| 齿轮箱效率 Gearbox Efficiency η | 73% | 65% | 59% |

电机参数/Driving Motor Data:

| DC Motor Model | Rated | No Load | | Max Efficiency Load | | | | Stall | |
|------------------|-------|---------|-------|---------------------|---------|---------|-------|--------|---------|
| | 电压 | 电流 | 转速 | 电流 | 转速 (nm) | 扭矩 (tm) | 率功 | 扭矩 | 电流 |
| | Volt. | Current | Speed | Current | Speed | Torque | P.out | Torque | Current |
| | V | mA | r/min | mA | r/min | gf.cm | W | gf.cm | mA |
| DM-3525-012-3000 | 12 | ≤40 | 3000 | ≤170 | 2200 | 25 | 0.6 | ≥120 | ≥600 |
| DM-3525-012-4500 | 12 | ≤60 | 4500 | ≤250 | 3300 | 35 | 1.2 | ≥180 | ≥900 |
| DM-3525-012-6000 | 12 | ≤100 | 6000 | ≤450 | 4500 | 45 | 2.1 | ≥200 | ≥1300 |
| DM-3525-024-3000 | 24 | ≤25 | 3000 | ≤80 | 2200 | 25 | 0.6 | ≥100 | ≥300 |
| DM-3525-024-4500 | 24 | ≤30 | 4500 | ≤130 | 3300 | 35 | 1.2 | ≥180 | ≥450 |

减数电机参数/Geared Motor Data :

| Gear Motor Model | 额定电压 Rated voltage | No load | | Max Efficiency Load | | | | Stall | |
|---------------------------|-----------------------|---------|-------|---------------------|---------|--------|-------|--------|---------|
| | | 电流 | 转速 | 电流 | 转速 (nm) | 扭矩 (t) | 率功 | 扭矩 | 电流 |
| | | Current | Speed | Current | Speed | Torque | P.out | Torque | Current |
| | V | A | r/min | A | r/min | kgf.cm | W | kgf.cm | A |
| DM-70SS3525-0129500-564K | 12 | 0.34 | 14.9 | 1.04 | 11.1 | 32.0 | 3.65 | 124.7 | 3.06 |
| DM-70SS3525-01211000-217K | 12 | 0.38 | 44.0 | 1.03 | 31.9 | 11.4 | 3.73 | 41.4 | 2.77 |
| DM-70SS3525-0243000-763K | 24 | 0.02 | 3.7 | 0.06 | 2.8 | 15.3 | 0.44 | 64.2 | 0.19 |

电机参数仅供参考, 请以实际样板为准; 可以依据客户要求定制参数。

The motor parameters are for reference only, please refer to real measured data;

We can customize parameters according to customer requirements.

减数电机输出转速=直流电机输出转速/齿轮箱减数比; 减数电机输出扭矩=直流电机输出扭矩*齿轮箱减数比*齿轮箱传动效率。

Gear Motor Output Speed=DC Motor Speed/Gear Ratio (n=n_m/i)

Gear Motor Output Torque=DC Motor Torque*Gear Ratio*Gearbox Efficiency. (t=t_m*i*η)